

# VISION 2018

The KPU VISION 2018 Strategic Plan declares a commitment to internationalization. To this end, the Learning Centres have created real and virtual spaces that facilitate interaction between domestic and international students.

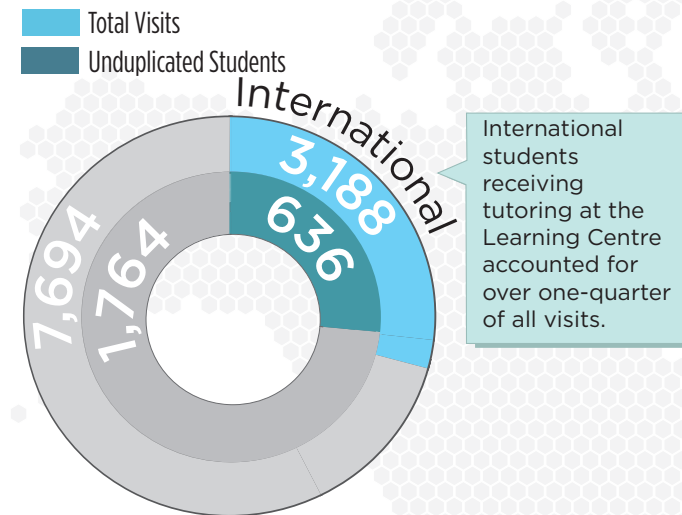
# International Students



## Student Distribution

### International Students & Visits

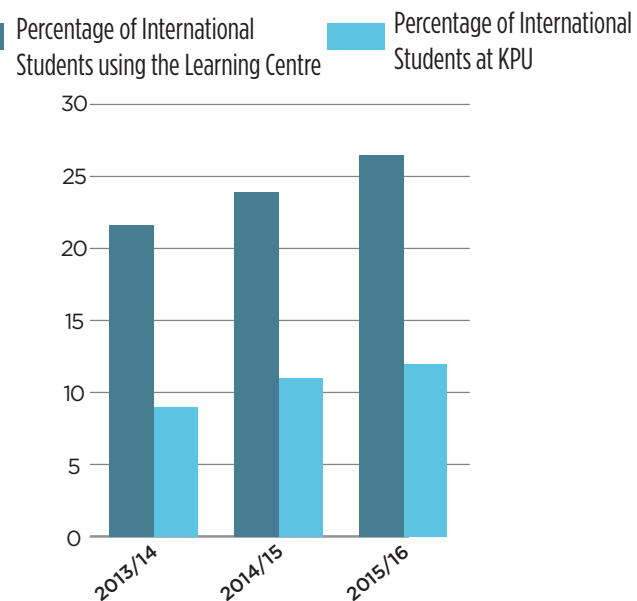
Tutoring Visits, Unduplicated Students, 2015-2016, %



The use of the Learning Centre by international students has increased at slightly more than the rate of increase we have observed in the growth of international student enrolments at KPU.

### International Proportion

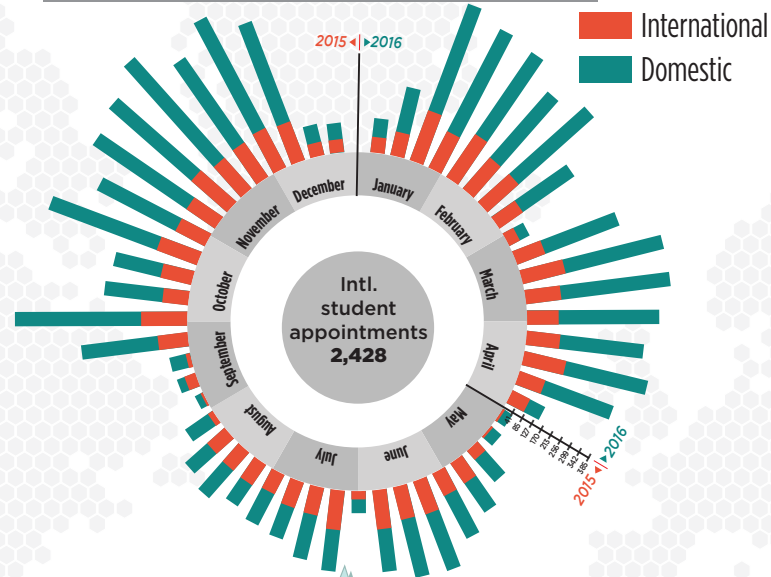
Learning Centres and International Growth  
Unduplicated International Student Use, 2013-2016, %



## Visit Distribution

### Weekly Visit Distribution

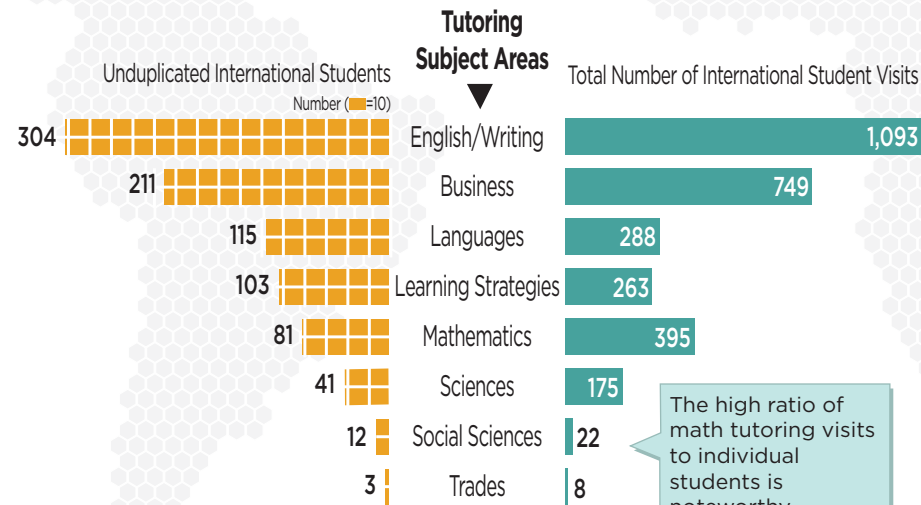
Number of tutoring visits, International and Domestic  
Total by year, month, week, 2015-2016, %



Tutoring appointments over the course of a year helps illustrate the academic calendar's impact on tutoring demand.

### International Students

Number of unduplicated international students, total visits  
By tutoring subject, 2015-2016

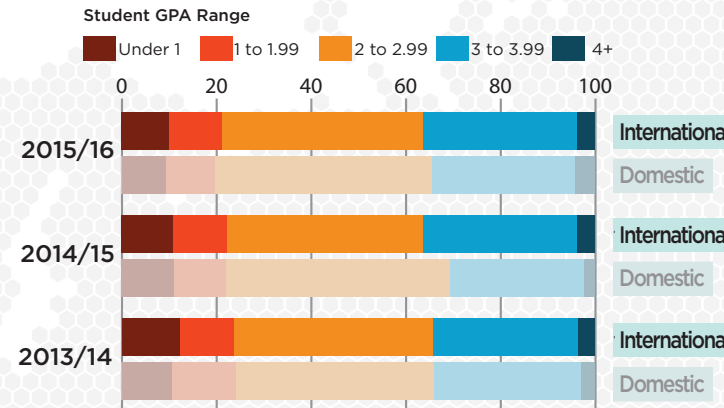


The high ratio of math tutoring visits to individual students is noteworthy. However, this high recurrence rate is also evident in domestic students.

## Academic Distribution

### Student Performance

Student Academic Performance, International and Domestic  
Grade Point Average (GPA), 2013-2016, %

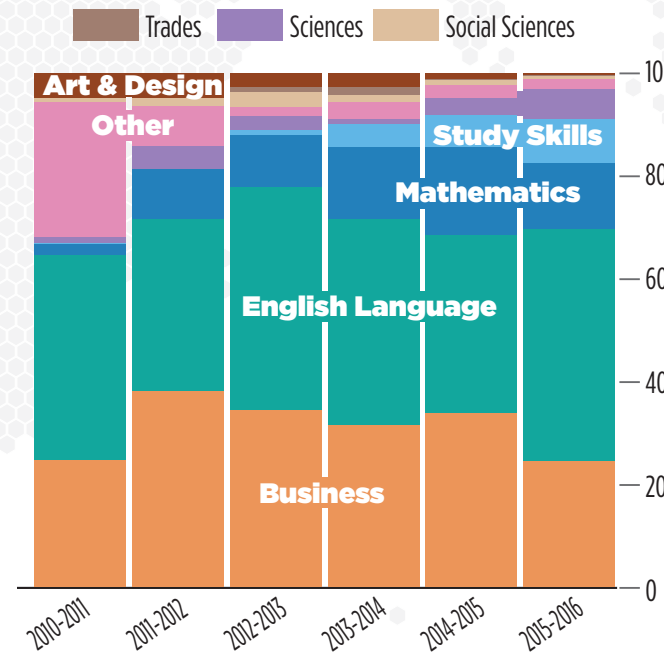


As this chart indicates, international students using the Learning Centre services are more likely to be either at-risk or have above-average GPAs, with relatively fewer in the 2 to 3 GPA range.

English Language tutoring has remained consistently popular among international students over the past six years. While Math tutoring has declined somewhat in the past year, study skills sessions have increased.

### Popular Tutoring Subjects

International Tutoring Visits by Subject Area, 2010-2016, %



## Student Workshops

The Learning Centres (TLC) exist to provide academic support for students so that they are better able to find success in their courses, be prepared for academic rigor, learn about and apply processes that lead to higher levels of self-regulation and deeper learning, and to instill the confidence and skills people need to engage in lifelong learning.

In addition to providing high quality peer tutoring to international students in a wide range of subject areas, we are developing a new series of student-led workshops designed to meet the unique needs of multicultural and multilingual students.

These workshops will enable existing peer tutors at the Learning Centre to plan, develop, and present workshops in a range of languages. They will focus on intercultural learning where the students presenting the workshops identify the similarities and differences between approaches to learning and studying in their home country and in the Canadian academic context.

The KPU students involved in these workshops, whether as attendees or as leaders, will be given the opportunity to grow as communicators and global learners. This experience will encourage them to develop personally as well as intellectually, to forge collegial relationships, and to understand and appreciate local and global approaches to learning and to help students avoid rote memorization and surface learning.

These workshops directly support KPU's Vision 2018 Strategic Plan, which encourages the enhancement of internationalization as a means of promoting better understanding of global challenges and citizenship among the KPU student population.

The workshops will begin their pilot run in spring 2017. If successful, these instructional sessions will be another means by which the Learning Centre simultaneously promotes the development of academic proficiency and social engagement among the KPU student population.