



Teaching & Learning Commons

NEWSLETTER

FEBRUARY 2024

Our office, Arbutus 2400, has undergone a refresh. Attend our re-opening celebration! More details inside!



A MESSAGE FROM THE T&L COMMONS AVPTL

A belated Happy New Year to you all! As 2024 begins, The Commons team would like to thank you for engaging with us on your various projects, course design and professional development goals. The team completed 544 personal consultations, support more than 20 program review teams and a whopping 1,940 technology support tickets! The coming year promises to be one full of more opportunities to partner with faculty, academic and support units and various administrative projects that support the learners at KPU! We expect there will be a strong focus around assessment redesign and rubrics to mitigate the challenges around academic integrity and the navigation of generative AI. The ISW

program continues to flourish, and we will offer even more sessions per year. ePortfolio and UN SDG champions are fully engaged in their various projects, which promise to provide valuable learning experiences. We have been evaluating our supports, resources and technologies in response to the KPU Accessibility Plan and action items to ensure we deliver on its recommendations.

This newsletter is full of information that I trust you will find useful. As you plan your various department and Faculty events for the year, we welcome opportunities to partner with you, support your event and enhance the feeling of community at KPU, please don't hesitate to reach out.

Looking forward,
Leeann

YOU'RE INVITED!

ATTEND OUR OFFICE REOPENING!

LOCATION: ARBUTUS 2400 (2ND FLOOR LIBRARY)

Chair Chats

Tuesday, February 20 and Tuesday, March 19, 2:00-4:00PM

We're excited to invite faculty to see our office refresh which includes a space for partnering with you! Partnership with Department Chairs is an important part of our work and we would love to have you join us in The "Commons Community Corner" for connection, brainstorming and consultation.

Generative AI Community of Practice

Thursday, February 22, 1:00-3:00PM

The TL Commons is initiating a community of practice to bring together educators who are considering using Generative AI in their courses or to support their work. It is our intention that this group will work together to develop knowledge, share use cases and inform KPU leadership decisions around Generative AI tools, policies and processes. Everyone is welcome.

Convocation Week!

Monday, February 26 and Wednesday, February 28, 12:00-2:00PM

TL Commons is excited to invite faculty to see our office refresh which includes a space for partnering with you! The "Commons Community Corner" provides a cozy space for consultations, collaboration or coffee with a friendly face!

VISIT THE COMMONS COMMUNITY CORNER!

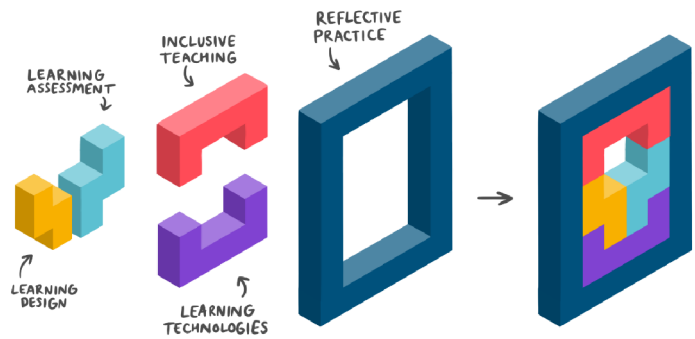


NO REGISTRATION NECESSARY!



Follow us on [LinkedIn!](#)

UPDATE TO FOUNDATIONS IN TEACHING EXCELLENCE MODULES



Foundations of Teaching Excellence (FTE) modules have been updated, and each module is now partitioned into two parts. The goal was to make this content more accessible for faculty and help alleviate the time commitment required to complete each module.

Part 1 should take approximately 1.5 hours to complete and is more introductory in nature, and Part 2 should take approximately 2.5 hours to complete and builds further upon the content from Part 1. Each module has its own overarching learning outcome in addition to a set of learning outcomes that covers the content of lessons throughout both Parts 1 and 2. For a complete overview of the FTE, [click here](#).

Effective February 05, 2024, those who were previously enrolled in the FTE have been migrated over to the new FTE courses and will not lose any badges they have earned.

Please reach out to tlcommons@kpu.ca with any questions or concerns.

Generative AI Training on LinkedIn Learning

The Teaching and Learning Commons is curating a list of training resources on LinkedIn Learning to act as a jumping off point for people interested in learning more about Generative AI, and its educational uses in and out of the classroom.

To get started, here are some videos that will provide foundational context:

[Ethics of AI: Challenges and Governance, UNESCO](#)
[Machine Learning, AI, and the Future of Education, TedX](#)

- LinkedIn Learning playlist coming soon!

Generative AI Community of Practice

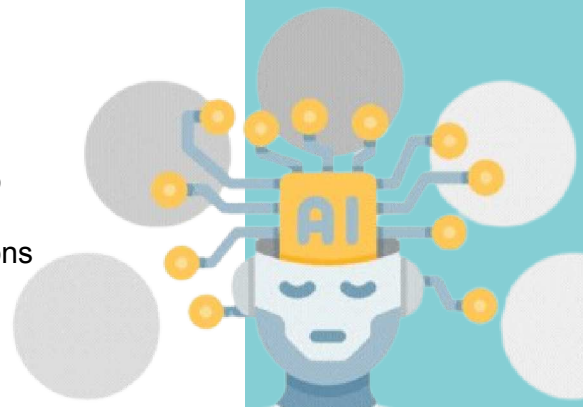
Facilitators: Leeann Waddington, Craig Wright

The TL Commons is initiating a community of practice to bring together educators who are considering using Generative AI in their courses or to support their work. It is our intention that this group will work together to develop knowledge, share use cases and inform KPU leadership decisions around Generative AI tools, policies and processes.

Everyone is welcome.

To learn more, visit the Generative AI Community of Practice page [here!](#)

EXPLORE THE WORLD OF GENERATIVE AI AT KPU!



Follow us on LinkedIn!

TECHNOLOGY ENHANCED E-CLASSROOMS



Teaching and Learning Commons is excited to share that KPU now has five Technology Enhanced e-classrooms. These classrooms provide everything a digital e-classroom would, plus the ability to record classroom presentations and the ability to livestream simultaneously students in the classroom and students online. These classrooms are also more accessible in nature with moveable furniture and sound acoustics. Drop by to one of these classrooms to get a sneak peek:

Fir 136 – General (SURREY)
Fir 124 – General (SURREY)
R 2540 - MSB scheduling region (RICHMOND)
L 2030 - FOH scheduling region (LANGLEY)
L 2575 – General (LANGLEY)

To learn about the capabilities of these e-classrooms and request to teach in a technology enhanced e-classroom, [click here](#).

Please contact tlcommons@kpu.ca for training and support on using the technology enhanced e-classroom.



LIGHTBOARD STUDIO

The long awaited lightboard studio located on the Langley campus (L2022) is now in full operation. If you are looking for an effective way to engage your students with creating asynchronous content that mimics the experience of teaching in front of a white board, please come experience how the lightboard might create a new spark in engaging your learners!

For more information on the lightboard studio and booking, [visit here](#). We are happy to assist you.

Attend the online orientation February 20, 10:00-11:30AM. [Register here](#).

MOODLE UPGRADE

Moodle is being upgraded to version 4.1 at the end of spring semester (more details to come). Improved user interface, accessibility and functionality will be provided. Additionally, Moodle is the final component of converting KPU to a unified login approach that uses email address for log-in, this process begins in February and both logins will work until May. Email communication coming soon.



[Follow us on LinkedIn!](#)

READING BREAK PROFESSIONAL DEVELOPMENT ACTIVITIES

Engage in the FTE asynchronous modules. [Click here.](#)

Check out the technology-enhanced classrooms. Attend the upcoming orientation session. [Learn more here.](#)

Attend the Generative AI Community of Practice kick off! February 22, 1:00PM, Surrey campus, Arbutus 2400 (2nd floor library).

Guest facilitators for our workshops!

- Fostering the Compassionate Community through Mindfulness. Facilitator Sarah Duncan
- Relearning Gender. Facilitator Trina Prince
- AccessAbility - Supporting All Learners. Facilitator Fiona Whittington-Walsh



[Read more about the workshops and register here.](#)

purpose STATEMENT

Through active intentional partnering, the Teaching & Learning Commons provides pedagogical leadership that is grounded in community, ethics, creativity, and care.



Connect with us!

✉ tlcommons@kpu.ca  kpu.ca/teaching-and-learning  [LinkedIn](#)