

TEACHING & LEARNING COMMONS

# NEWSLETTER

*April 2023*



## This Month at a Glance

- 1 Message from AVPTL
- 3 Partner Spotlight
- 5 Professional Development
- 6 Important Reminder

## A Message from Dr. Leeann Waddington AVPTL Teaching and Learning



*Well, no surprise...changes in technology continue to have an impact on post-secondary learning environments.*

In November, the release of a robust generative artificial intelligence (AI) tool called ChatGPT created panic for some and excitement for others. Concerns about academic integrity, collection of personal information, and fears about how this technology can grow in the future, weighed heavy. For others, the excitement of leaning into innovation and the acceptance of a “tool” that could be used to prepare students for the real world spurred energy. As you know, here at KPU, we chose to pause. Pause, research, evaluate and assess risk in order to determine how to proceed. I am certain this approach received some criticism, caused frustration and a sense of urgency to receive direction. By way of this communication, I hope to make transparent our intentions, rationale, and a path forward. I will not claim this solution to be “perfect” but rather a starting place from which we can all learn and evolve together.

The mission of teaching and learning is pedagogical leadership that is grounded in community, ethics, creativity, and care. I believe we have identified an approach that provides guidance and autonomy, supports innovation while balancing ethics, and allows us to be nimble in what will certainly be constantly changing functionality in AI tools.

At a recent professional development event I was introduced to the concept of “[thinking inside the box](#)” as opposed to outside of it. An important distinction I had never considered. When we think outside the box, we brainstorm solutions that have no parameters and are often unachievable within our resources, abilities or external factors such as legislation.

When we think inside the box, however, we identify the reality within which we must function; and we brainstorm the possibilities that can be achieved. It occurred to me that this framing could be very helpful for teaching and learning on an ongoing basis. The parameters of the box for teaching and learning are often the same; specifically, the values and goals of our organization, the limitations of legislation, and the fiscal and human resource capacities of our departments.

So, this communication shares with you the results of our thinking inside the box related to generative AI and teaching and learning. You will find the concepts that require caution lining the exterior of the proverbial box and some possibilities for safe and ethical use inside it. The team has created an [interactive H5P](#), by hovering over any of the concepts on the exterior of the box you will be provided a definition of that concern, an example, and some mitigation strategies. Inside the box, you will find some possible ways to use generative AI in your teaching practice.

As a second step to this guidance, we will be hosting a Generative AI for TL Think Tank on May 5. This event will include a guest speaker and an opportunity to collectively brainstorm more ways to innovate TL through the use of generative AI. We hope to bring together those who wish to innovate and use our collective wisdom to expand the possibilities.

If you have feedback on this approach, additional questions, or other ideas for how we can provide support around this topic, I invite you to email me directly.



### Questions?

The Teaching and Learning Commons have resources and strategists who can assist you with design of learning activities and assessments.

For assistance please contact:

[TLCcommons@kpu.ca](mailto:TLCcommons@kpu.ca)

For information about academic integrity as it relates to generative AI, please contact:

[academic.integrity@kpu.ca](mailto:academic.integrity@kpu.ca)

# GENERATIVE AI THINK TANK

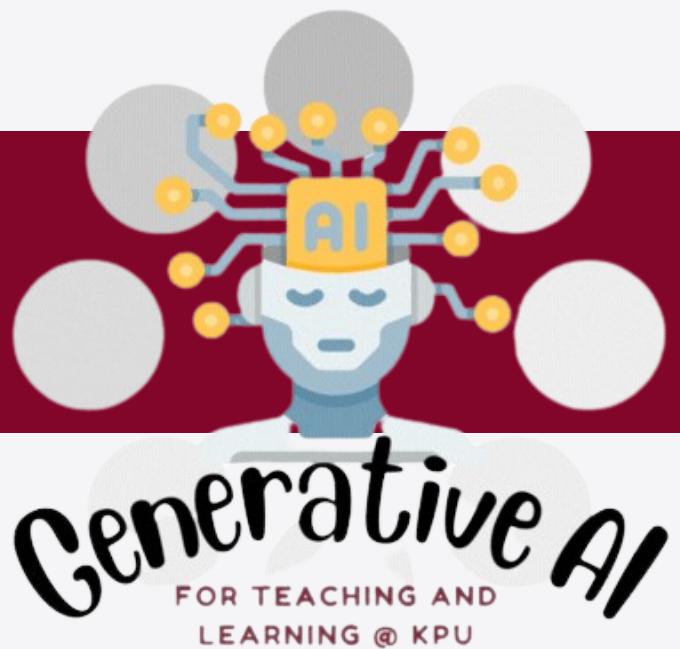
Friday, May 5, 2023

9:00AM - 12:00PM

HYFLEX: Attend online or KPU

Surrey campus, Fir 136

**REGISTER [HERE!](#)** 



Join us in person or online for the Generative AI for Teaching & Learning Think Tank session to partner with KPU faculty to develop safe, effective uses for generative AI in KPU learning environments.

We will be joined by guest speaker, Dr. George Veletsianos who will share his perspective on generative AI technology and guide us through activities to collectively brainstorm more ways to innovate teaching and learning through use of generative AI. We hope to bring together those who wish to innovate and use our collective wisdom to expand the possibilities.

Dr. George Veletsianos (Γιώργος Βελετσιάνος) was born and raised in Cyprus, and now lives in Victoria BC, where he is Professor in the School of Education and Technology at Royal Roads University. He holds the Canada Research Chair in Innovative Learning and Technology and his research focuses on three strands: (1) design, development, and evaluation of online and blended learning environments, (2) the study of learning experiences and participation in emerging online environments, and (3) learning futures.

# PARTNER SPOTLIGHT EVENT

Thank you to all those who joined us for our March 16 Event!

If you were not able to attend our March event, you can watch our latest Partner Spotlight event [here!](#)



## **CO-CREATING THE COMPASSIONATE COMMUNITY: TRAUMA AWARENESS AND WELLBEING**

Lisa Gedak, Ross Laird, Sarah Duncan & Maureen Lee

This impactful presentation took us through a series of reflective activities highlighting mindfulness, wellness, and the importance of pausing to acknowledge the humanity of those around us.

## **DIGITAL STUDENT LEARNING: LEARNING COMMUNITIES IN EACS**

Gillian Sudlow, Teresa Swan, Simon Driver

What a great example of "building the plane while flying"! This presentation talked about the ins and outs of a department's commitment to embedding and implementing ePortfolios into their work. A very unique presentation that incorporated students from the EACS program who were able to share their personal experiences in using PebblePad.

## **NOT JUST FOR THE SCIENCE FOLKS: AN ARTS FACULTY'S PEDAGOGICAL JOURNEY WITH THE SDGS**

Amanda Grey & Candy Ho

Candy, shared her experience as a past UNSDG fellow, as well as how her awareness of UNSDG goals has continued to impact her teaching practice today.

**We are looking forward to another round of Appreciating Teaching Excellence this fall!**



## IN MEMORIAM



It is with profound sadness that we share the passing of our friend and colleague, KPU instructor, Arley McNeney (Cruthers). Arley was a valued member of the Teaching and Learning community, providing a passionate voice to the open education movement. Arley published [\*Business Writing For Everyone\*](#), a now widely used OER in 2019.

To learn more about Arley and her work check out our [2019 Faculty Spotlight here](#).

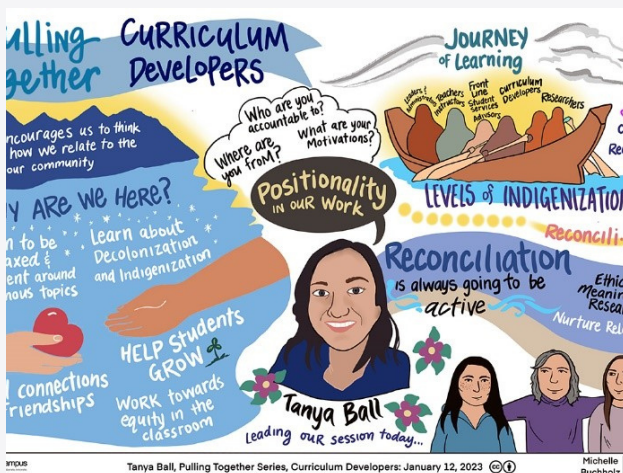
We at the Teaching and Learning Commons wish to offer our most sincere condolences to her family, friends, and colleagues. Arley's contributions will be a great loss.

## TECH UPDATE

### UNIFIED LOGIN IS COMING

KPU IT is launching Unified Login on June 3, 2023. With Unified Login students and employees will log in to most KPU IT applications using their KPU-issued email address (@student.kpu.ca or @kpu.ca) instead of using KPU ID number or username.

**Please note, Moodle and PebblePad will NOT be included in the unified login process at this time.**



### NEW BLOG! PEDAGOGY + PRACTICE

Fourteen simple strategies to help KPU educators support Indigenous learners today! Lessons from the BCcampus Pulling together series  
By: Lisa Gedak

READ IT [HERE](#)

## CHECK IT OUT!



### WORKSHOPS

- Browse all of our upcoming workshops and register for them [HERE](#)
- Thinking about your summer PD? Consider taking Foundations for Teaching Excellence
- Want to learn with colleagues in your department? Contact us @ for help with customised learning opportunities



AAEEBL

### UPCOMING CONFERENCES

The Teaching and Learning Commons, in partnership with The Association for Authentic, Experiential, & Evidence-Based Learning ([AAEEBL](#)), is hosting an ePortfolio event this summer.

[eportfolio Learning in the Age of Artificial Intelligence: Fostering Authentic Assessment Through Inclusive Pedagogies and Design Justice](#) will be held at KPU Richmond, July 20-21.

Call for proposals now open Deadline April 24 and can be found [HERE!](#)

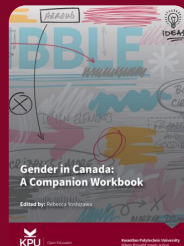
## OPEN EDUCATION



ZTC Results are in!  
In Summer 2023 KPU will be offering **298** ZTC Course Sections

## NEW OPEN EDUCATION RESOURCES

### GENDER IN CANADA



### LA HORA DEL CUENTO



FIND A COMPLETE CATALOGUE OF OPEN EDUCATION RESOURCES [HERE!](#)

Need Support finding OER Resources for your fall courses? Contact us at: [open@kpu.ca](mailto:open@kpu.ca)



### New Resource!

A new request form has been created.

This will make it easier to support faculty looking for OERs to use in their courses.

Find the form here:

[Finding Open Education Resources](#)

# REMINDER

## END OF SEMESTER CHECKLIST



### Back up

To backup your course.

- Go into your course.
- Click on **Gear icon** ⚙️
- Select **Backup**.
- Choose your back up initial settings, click **Next**.
- Select what you want to include in backup from your course, click **Next**.
- Check that everything is as required, using the Previous button if necessary, and then click **Perform backup**.
- It will show the backup was successfully completed. Click on **Continue**.

### Download a copy

Under course backup area, you will see your file. Now you can **download** it.



### Export your grades

To export grades from the gradebook.

- Go into your course.
- On the left-hand side Administration Block, Select **Grades**.
- From the drop-down menu, Choose an **Export Format**.
- Select the grade items you want to include. Note that ID numbers are required for all activities for **XML file** export.
- Click the **Download** button.
- Choose **Excel Spreadsheet** format from drop-down menu.
- Again select the grade items you want to include.
- Click the **Download** button.



### FOLLOW ALONG WITH THE T&L COMMONS:



@KPU\_TLCommons



PEDAGOGY + PRACTICE



[www.kpu.ca/teaching-and-learning](http://www.kpu.ca/teaching-and-learning)